

GCP comms update

Q2 July - September 2018

Consultation & engagement

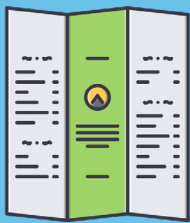
5

Public consultations

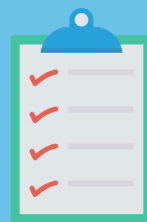
- Making space for people
- Barton Greenway
- Haslingfield Greenway
- Milton Road
- Histon Road



22 public meetings
approx. **500** conversations



24,000 leaflets distributed

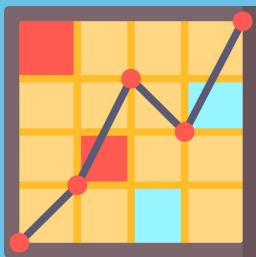


2,822 survey responses



11,474 emails sent

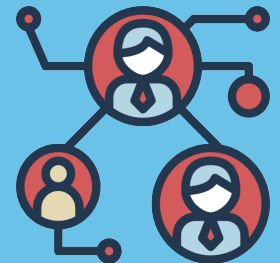
Web & social



17,585 website visits
36,292 unique pageviews



3,078 followers across
three social media channels



Avg **1,909** people
reached per post

In the news



49 media mentions

Four new park and ride sites to be built around Cambridge

Consultation to launch on Milton Road improvement plans

Cambridge hits the Smart Cities big time

Work begins on cycling improvements between Cambridge and Fen Ditton

Greater Cambridge businesses to hear 'smart' travel technology benefits



@GreaterCambs



/GreaterCam



@GreaterCam

www.greatercambridge.org.uk



**GREATER
CAMBRIDGE
PARTNERSHIP**