

South Cambridgeshire Crime and Disorder Update 2012/13

Crime Reduction

- Total Crime Reduction of 6% (252) (4,779)
- Violent crime -10.4% (75) (780)
- Vehicle crime – 3.3% (16) (571)
- Criminal Damage - 21.7% (159) (696)
- Shoplifting - 5.7% (8) (160)
- Commercial burglaries – 2.1% (6) (332)

Crime increases

- Domestic abuse – 19.2% (41) (309)
- Burglary dwelling – 10.4% (31) (398)
- Theft pedal cycles – 14.8% (30) (283)
- All drugs offences – 23.2% (49) (315)
- Shed/Garage breaks – 14.9% (25) (234)

Perception of ASB

The percentage of respondents who perceive that there is a high level of ASB in their area

Dec 2011 – 0.5%

Dec 2012 – 0.2%

Confidence

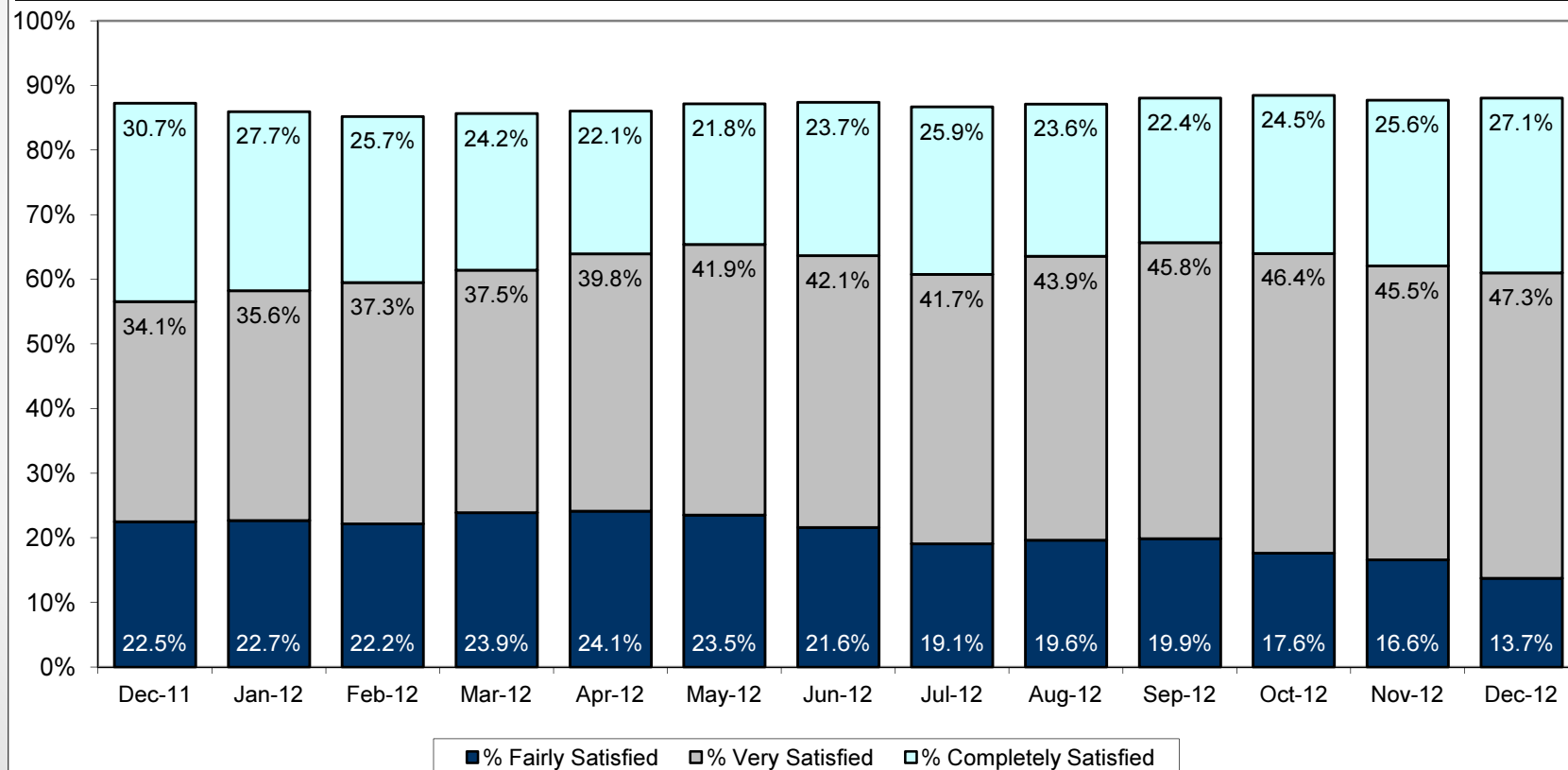
‘Cambridgeshire Police are dealing with the things that matter to people in my community’

- Dec 2011 – 66.9%
- Dec 2012 – 73.0%

- 6.1% increase

Satisfaction - 1

South Cambridgeshire; Breakdown of % Satisfaction with Whole Experience over the last 13 months; using 12 months rolling data for All Categories (excl Racist) to the end of each of the months displayed



Satisfaction - 2

South Cambridgeshire; All Categories (excl Racist); Satisfaction with Aspect - Comparing 12 months ending December 2012 to 12 months ending March 2012

